



GAT MONTHLY MEMBERSHIP PROGRESS REPORT

Results as of: 5/31/2022

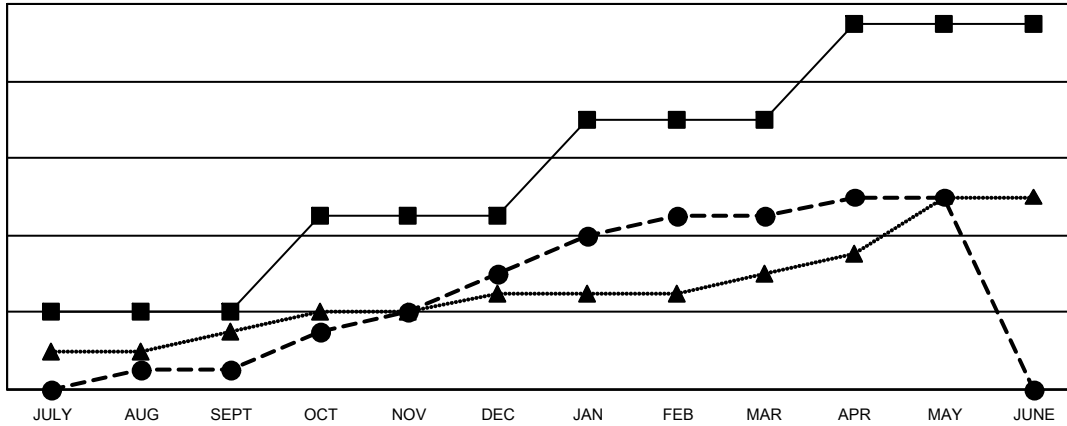
Multiple District 411

LOCATION: KENYA AFRICA

| Clubs | | | |
|-----------------------|---------------|-----------|---------------|
| RESULTS FOR 2021-2022 | | | |
| QUARTER | NEW CLUB GOAL | NEW CLUBS | DROPPED CLUBS |
| JULY/AUG/SEPT | 4 | 1 | 2 |
| OCT/NOV/DEC | 5 | 5 | 8 |
| JAN/FEB/MAR | 5 | 3 | 1 |
| APR/MAY/JUNE | 5 | 1 | 0 |

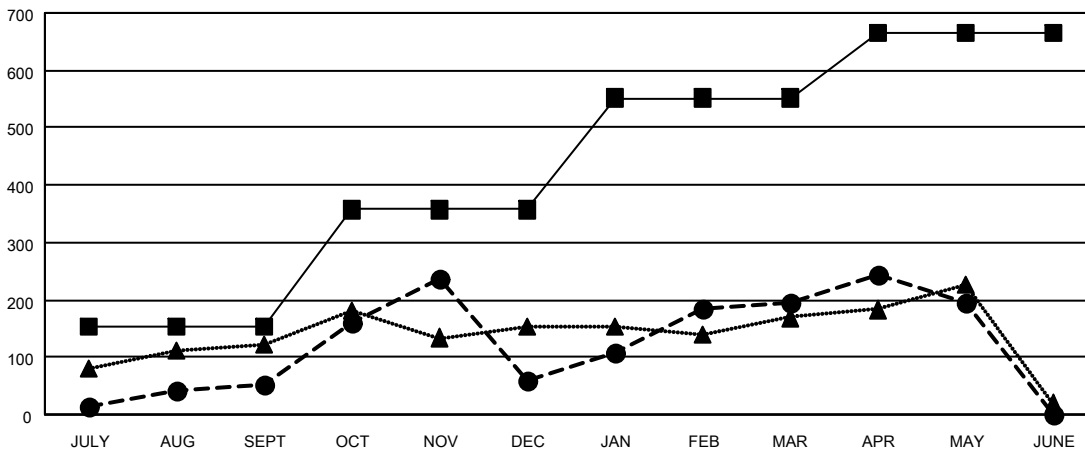
| Members | | | |
|-----------------------|------------------------|----------------------|--|
| RESULTS FOR 2021-2022 | | | |
| QUARTER | MEMBER GROWTH NET GOAL | MEMBER GROWTH ACTUAL | DROPPED MEMBERS ACTUAL (including transfers) |
| JULY/AUG/SEPT | 152 | 195 | 134 |
| OCT/NOV/DEC | 205 | 308 | 300 |
| JAN/FEB/MAR | 195 | 259 | 115 |
| APR/MAY/JUNE | 112 | 155 | 124 |

GOALS AND ACTUAL NEW CLUBS CUMULATIVE



- - CURRENT YEAR GOALS FOR NEW CLUBS
- - CURRENT YEAR ACTUAL NEW CLUBS
- ▲ - LAST YEAR ACTUAL NEW CLUBS

GOALS AND ACTUAL MEMBERS CUMULATIVE



- - MEMBER GROWTH NET GOAL
- - MEMBER GROWTH ACTUAL
- ▲ - LAST YEAR MEMBERSHIP ACTUAL

| | |
|------------------------|------------|
| DROPPED CLUBS: 11 | |
| DROPPED MEMBERS | |
| DECEASED | 18 |
| CLUB CANCELLED | 247 |
| OTHER | 407 |
| TOTAL | 672 |

103 CLUBS OF 147 ADDED 1 OR MORE NEW MEMBERS

[CLICK HERE FOR CUMULATIVE MEMBERSHIP DATA](#)

| GENDER DISTRIBUTION | |
|--|----------------|
| MALE | 2,414 (61.32%) |
| FEMALE | 1,517 (38.53%) |
| NON BINARY | 0 (0.00%) |
| PREFER NOT TO ANSWER | 6 (0.15%) |
| TOTAL FAMILY UNIT MEMBERS | 1,100 |
| FAMILY MEMBERS PAYING HALF DUES | 670 |